



LEATHER SINCE 1933

Athena

Athena is the first leather that merges today's most innovative tanning technology with ALTA stain repellent technology. After years of development, Moore & Giles, applied: textiles and TENERIAS Omega in Spain were able to bring the same safe ALTA stain repellency science to leather that is found in many other fabric applications. Featuring a palette of this season's most standout colors, ATHENA was created to offer all of the attributes of leather coupled with the peace of mind of ALTA technology to meet the demands of today's modern lifestyles. ATHENA is smart, easy leather. Learn More **Small minimum order quantities may apply.** *Contact Us:*

Phone: 800.737.0169

Email: hello@mooreandgiles.com or use our chat feature below

FEATURES

- ALTA stain repellent technology
- Designed to meet the demands of modern lifestyles

COUNTRY OF ORIGIN

Spain

TANNAGE

Chrome

FINISH

Semi-Aniline

CHARACTER

Smooth

GRAIN

Full Grain

HIDE TYPE

Bovine

CONFIGURATION

Whole Hide

TESTING

ASTM D 5053 Crocking, ASTM D 2209 Tensile Strength and Elongation, Fluid Testing, ISO 105-B02 Colorfastness to Light, ASTM D 4157 Wyzenbeek, FAR 25.853, FR Code Compliant: NFPA 260 and CAL TB117

CERTIFICATIONS

Clean Air Gold



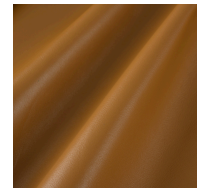
Eggshell



Iron



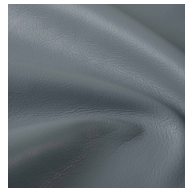
Arctic White



Praline



Noir



Mineral



Cinder



Fir